

Trustee Map Process

County Committee on School District Organization

Niambi Clay, Secretary

County Committee on School District Organization

January 2022



SAN MATEO
COUNTY
OFFICE OF
EDUCATION

Trustee Map Review

County Committee on School District Organization (CCSDO) responsible for reviewing and, if necessary, adjusting County Board of Education Trustee Areas.

- Following the Decennial Census
- Upon Request from the County Board of Education



CCSDO Members

Name	Supervisory District
Dennis P. McBride	At-Large
Greg Dannis	1
Lynne Esselstein	1
Samuel Leinbach	2
Melchior Thompson	2
Rosie Tejada	3
Virginia Bamford	3
Hilary Paulson	4
Maria Hilton	4
Lillian Markind	5
Bill Lock	5

Trustee Map Subcommittee Member

CCSDO - Trustee Map Timeline

Action	Date
CCSDO Regular Meeting - SMCOE Trustee Areas process introduced	Nov 1, 2021
CCSDO Trustee Maps Subcommittee established (Esselstein, Lock, McBride, Paulson, Thompson)	Nov 1, 2021
Trustee Maps Subcommittee Meeting 1	Nov 15, 2021
Trustee Maps Subcommittee Meeting 2	Dec 2, 2021
CCSDO Regular Meeting - SMCOE Trustee Areas discussion	Dec 6, 2021
CCSDO Regular Meeting - SMCOE Trustee Areas discussion & Public Hearing	Jan 10, 2021
CCSDO update to the SMC Board of Education	Jan 19, 2022
CCSDO Regular Meeting - SMCOE Trustee Areas discussion & Public Hearing	Feb 7, 2022
Trustee Maps Subcommittee Meeting 3, if needed	TBD Feb 2022
CCSDO Regular Meeting - SMCOE Trustee Areas discussion & Adoption	Mar 7, 2022
Final date for CCSDO to approve Trustee maps	Mar 2022
Shapefiles to the Registration & Elections Division due	Apr 2022

Trustee Map Considerations

Primary Factor

- Trustee Areas contain the same number of residents
- Maximum allowable margin of deviation is 10%

Other Considerations

- Communities of Interest
- Geographical Elements
- Contiguous Areas (avoid islands)



Additional Data Reviewed

These items are not considered in the criteria for County Board map revisions

- SES Data
- Racial/Ethnic Data
- Trustee Residential Locations



Current Trustee Areas

SAN MATEO COUNTY BOARD OF EDUCATION

Trustee Area 1

- Belmont-Redwood Shores
- Cabrillo
- La Honda-Pescadero
- Sequoia Union (shared with Areas 6 and 7)

Trustee Area 2

- Bayshore
- Brisbane
- Jefferson Elementary
- Jefferson Union
- Pacifica

Trustee Area 3

- San Bruno Park
- San Mateo Union (shared with Areas 4 and 5)
- South San Francisco

Trustee Area 4

- San Mateo-Foster City
- San Mateo Union (shared with Areas 3 and 5)

Trustee Area 5

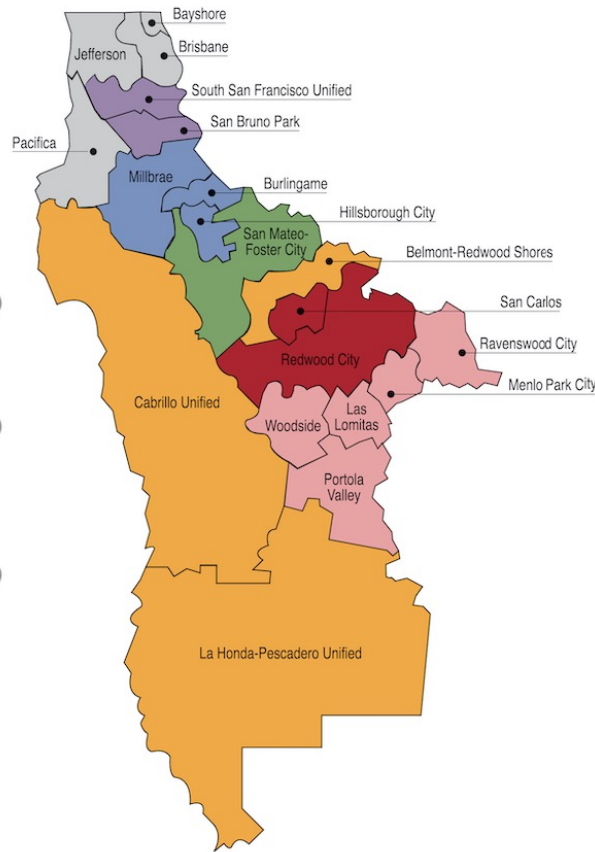
- Burlingame
- Hillsborough
- Millbrae
- San Mateo Union (shared with Areas 3 and 4)

Trustee Area 6

- Redwood City
- San Carlos
- Sequoia Union (shared with Areas 1 and 7)

Trustee Area 7

- Las Lomitas
- Menlo Park
- Portola Valley
- Ravenswood
- Sequoia Union (shared with Areas 1 and 6)
- Woodside

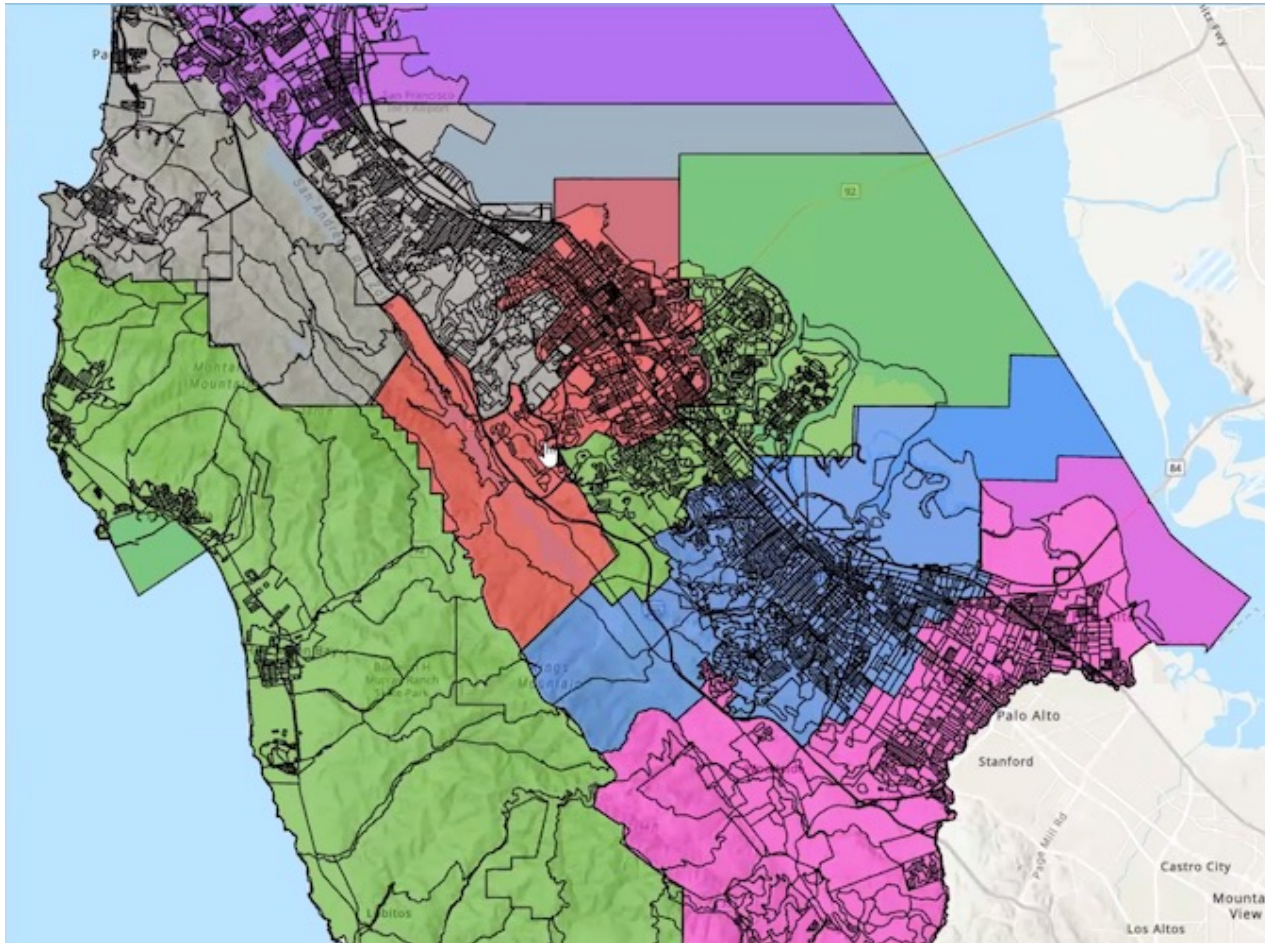


Main Consideration in 2010
Mapping Process:

Align with Elementary School
Districts

Trustee Area	2020 Population
Area 1	74,594
Area 2	143,343
Area 3	120,091
Area 4	140,513
Area 5	70,306
Area 6	129,648
Area 7	85,872

San Mateo County Census



- San Mateo County population density varies widely
- Fun fact: Census Tracts extend out into the water

Trustee Map Review 2021

Current Trustee Areas
(Communities of Interest)



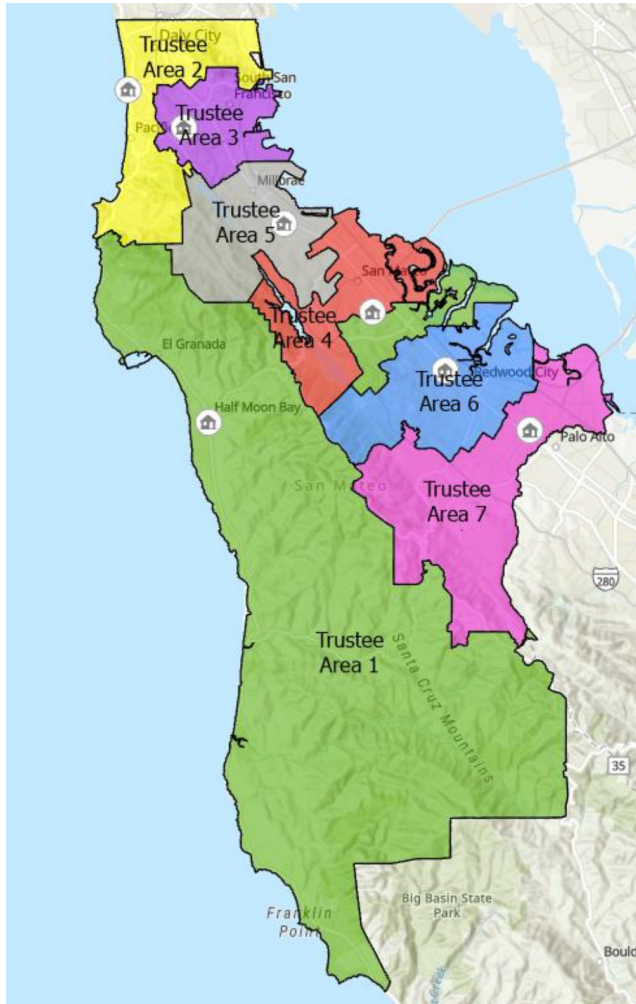
Adjust cities/districts/neighborhoods
(Balance the Population)



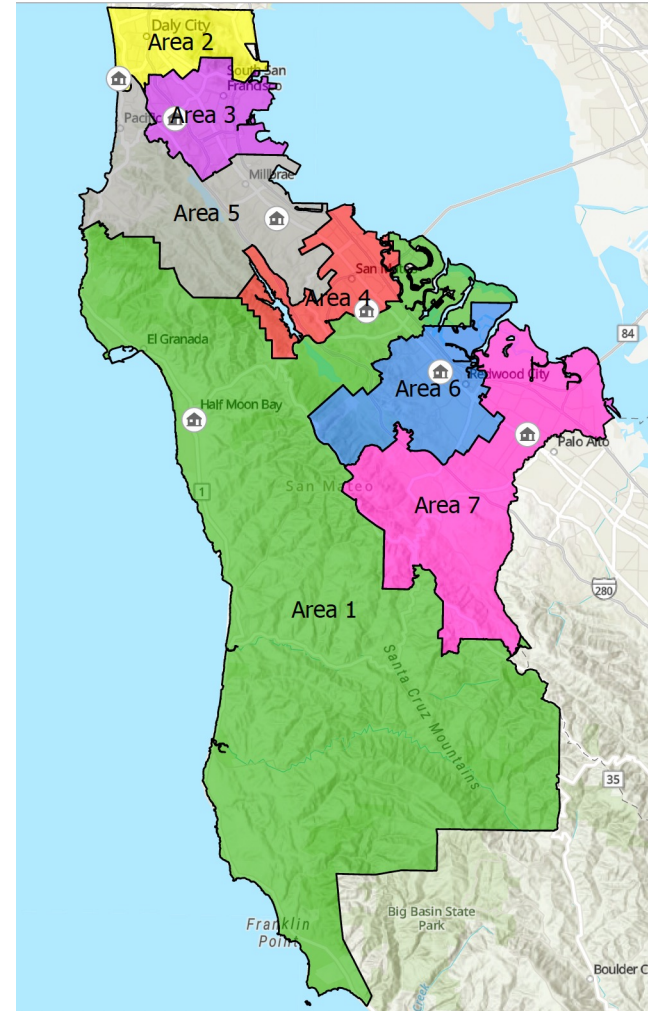
Adjust census blocks
(Contiguous Areas)

Current and Adjusted Maps

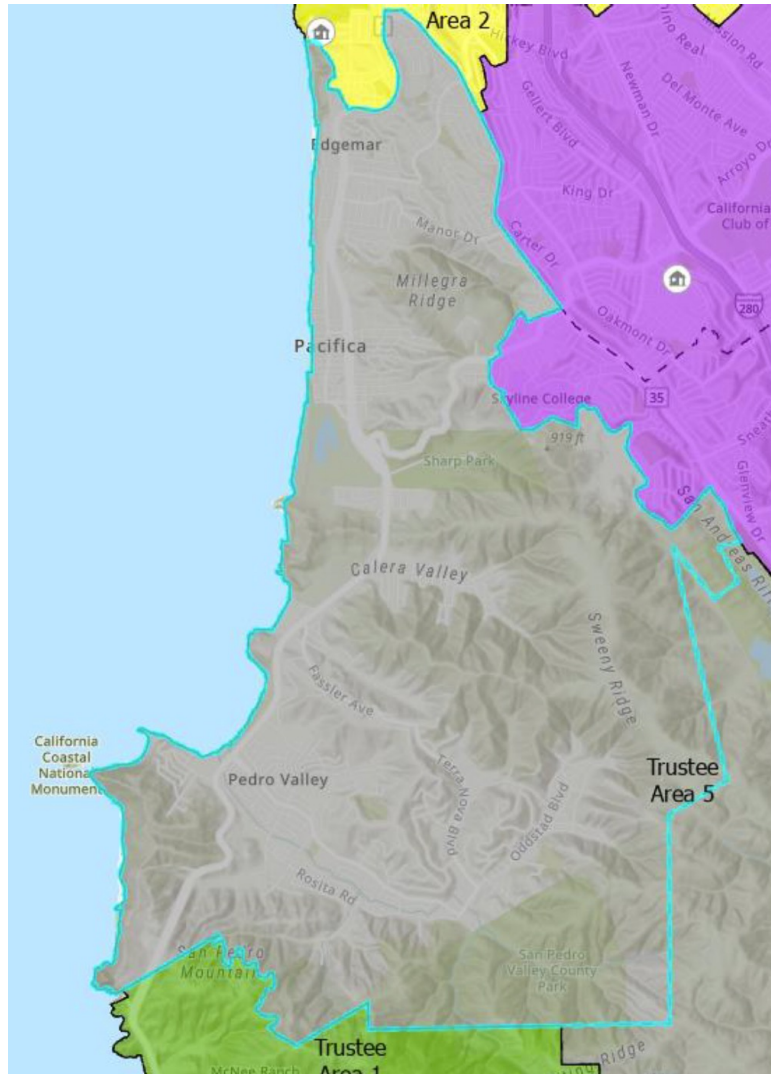
Current Trustee Areas



Adjusted Trustee Areas



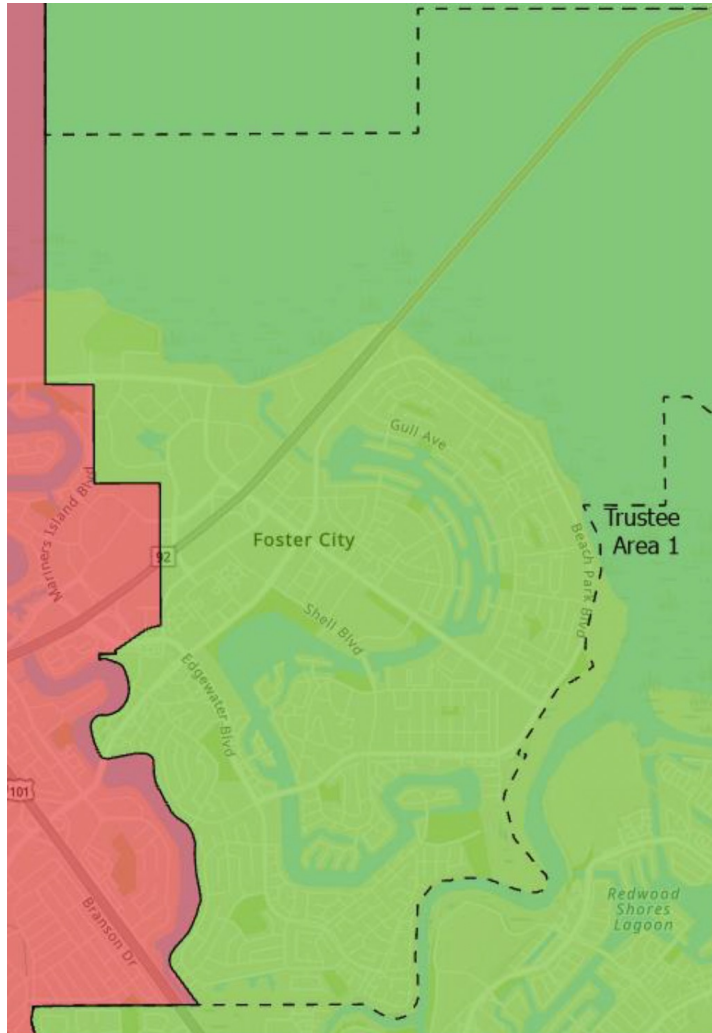
Trustee Map Adjustments (1 of 4)



Moved Pacifica School District from Area 2 to Area 5.

Trustee Area	2020 Population
Area 1	74,594
Area 2	143,343
Area 3	120,091
Area 4	140,513
Area 5	70,306
Area 6	129,648
Area 7	85,872

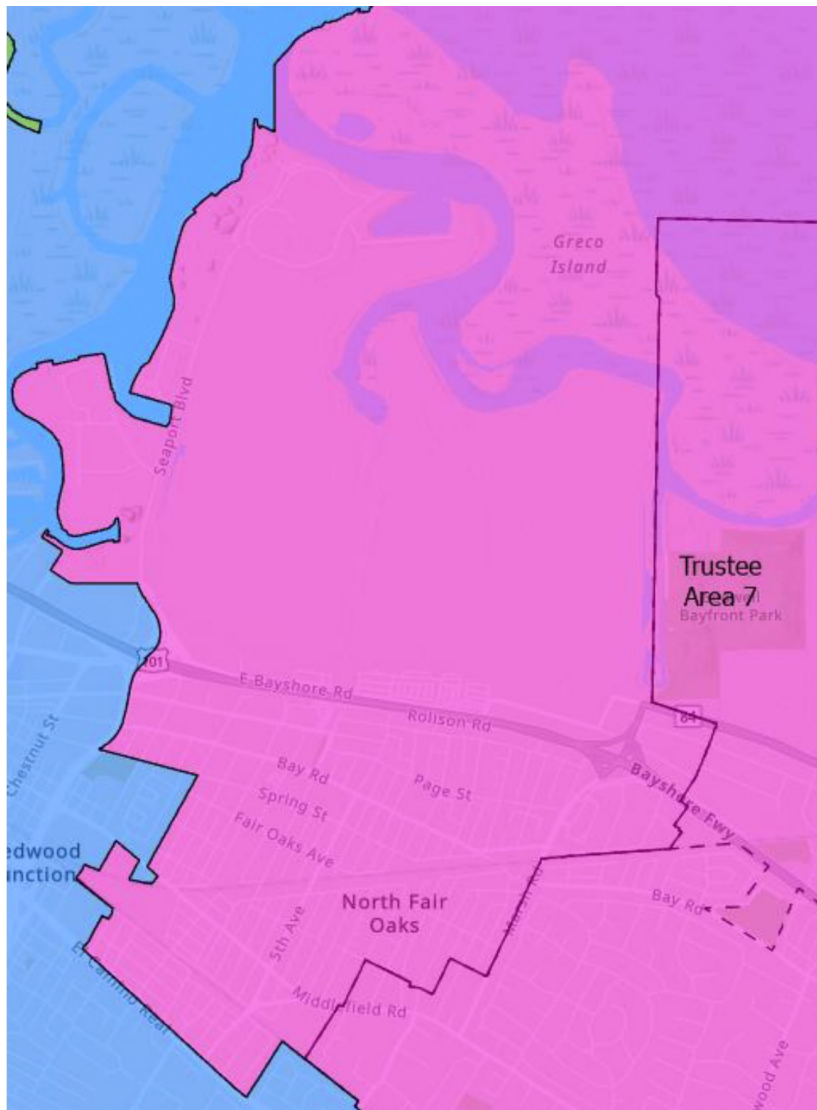
Trustee Map Adjustments (2 of 4)



Moved Foster City from Area 4 to Area 1.

Trustee Area	2020 Population
Area 1	74,594
Area 2	143,343
Area 3	120,091
Area 4	140,513
Area 5	70,306
Area 6	129,648
Area 7	85,872

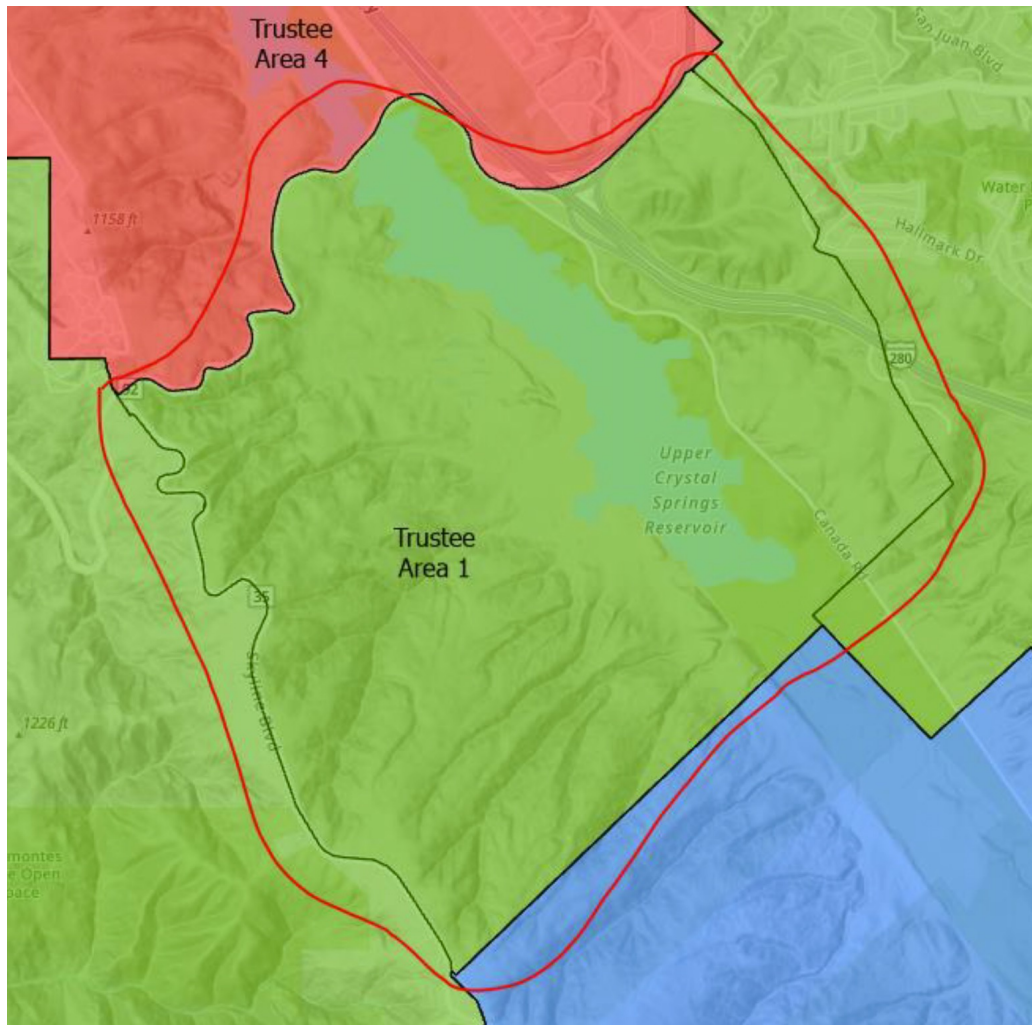
Trustee Map Adjustments (3 of 4)



Moved North Fair Oaks neighborhood and area north of U.S. Highway 101 (all the way to the water) from Area 6 to Area 7.

Trustee Area	2020 Population
Area 1	74,594
Area 2	143,343
Area 3	120,091
Area 4	140,513
Area 5	70,306
Area 6	129,648
Area 7	85,872

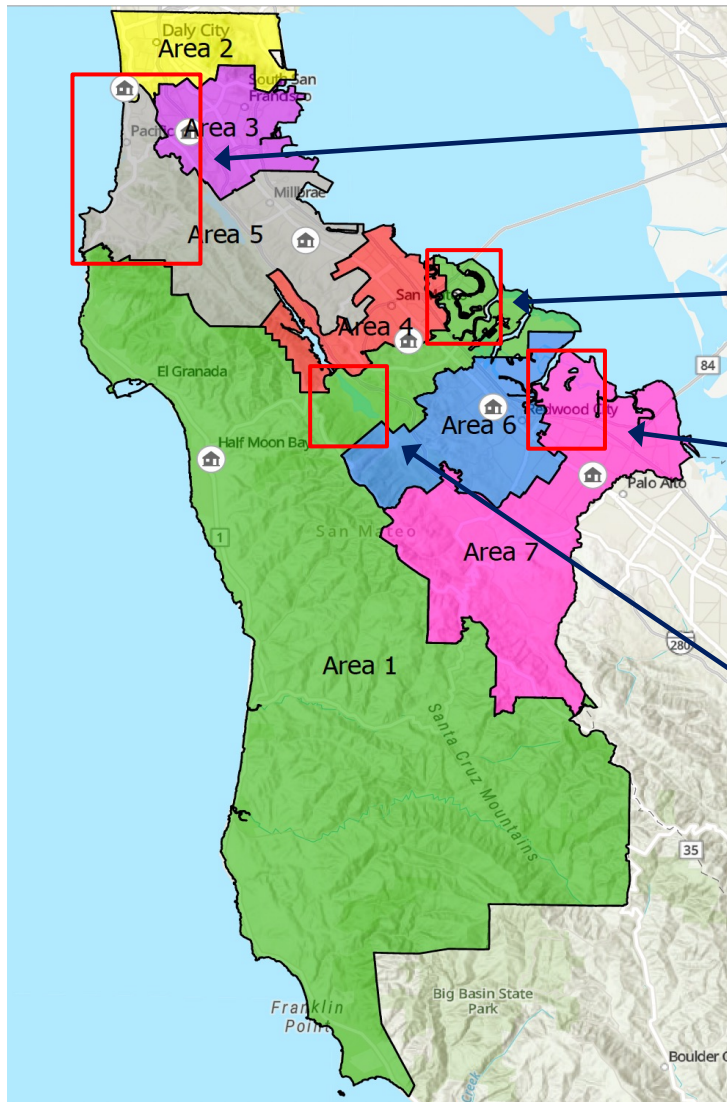
Trustee Map Adjustments (4 of 4)



Moved area near
Upper Crystal
Springs Reservoir
from Area 4 to
Area 1 to make
Area 1 contiguous.

(24 residents)

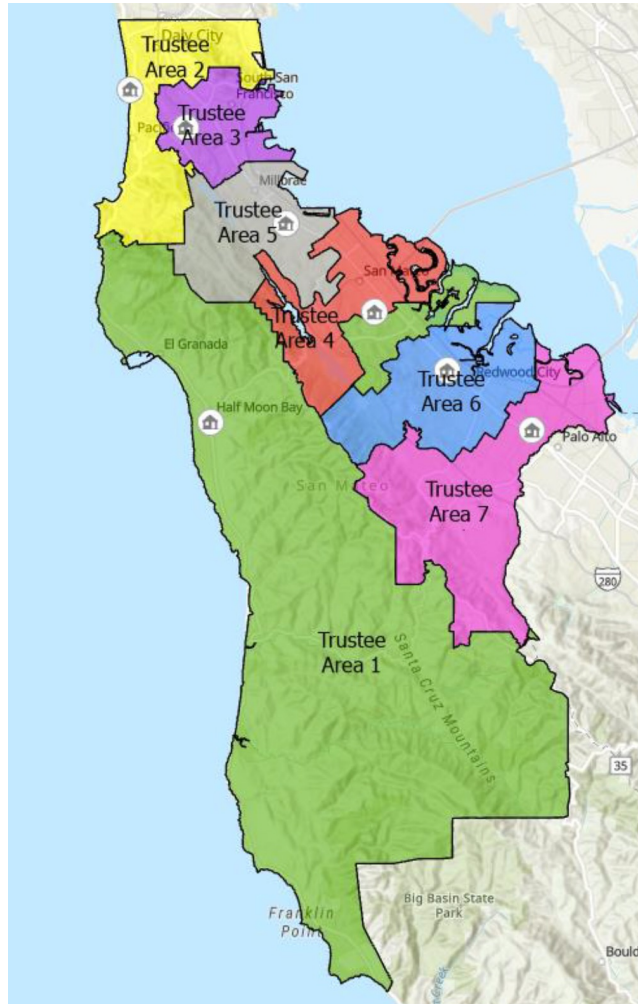
Adjustments Overview



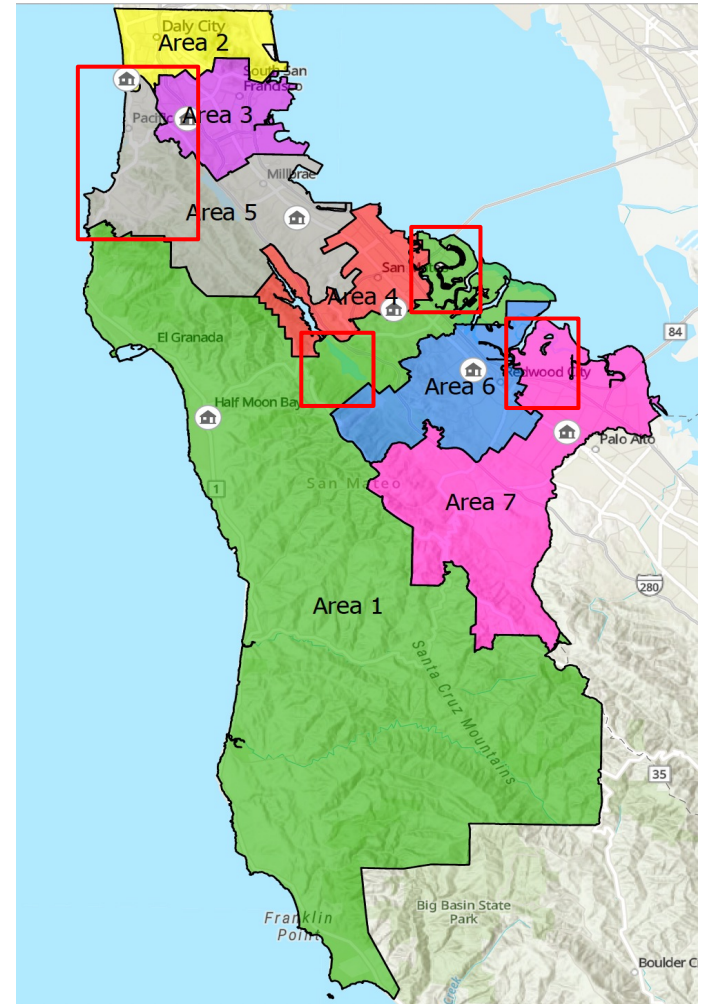
- Moved Pacifica School District from Area 2 to Area 5.
- Moved Foster City from Area 4 to Area 1.
- Moved North Fair Oaks neighborhood and area north of U.S. Highway 101 (all the way to the water) from Area 6 to Area 7.
- Moved area near Upper Crystal Springs Reservoir from Area 4 to Area 1.

Current and Adjusted Maps

Current Trustee Areas



Adjusted Trustee Areas



Legal Standard

- Equal Protection clause requires votes to count equally
- “One person, one vote” requires general population equality among electoral districts
- Legal standard is that total population deviation above 10% is “constitutionally suspect”
- Maps with deviations below 10% threshold are generally acceptable

Legal Standard

- Example: In 2010 Census, Area 2 had 137,012 residents; Area 5 had 65,202 residents
- If elected by district, each resident in Area 5 would have over twice the voting power of each resident in Area 2
- But in 2010, Board of Education members were not elected by district, so “one person, one vote” standard wasn’t violated

Legal Standard

- Step 1: Calculate the “ideal population” of each district (here, $1/7$ of total 2020 population, or 109,195)
- Step 2: Calculate the absolute value of amount a district is above or below the ideal; this is the “absolute deviation”
- Step 3: Divide absolute deviation by ideal population; this is the percentage that should be below 10%

Example of Area 5

2010, current map

- 2010 Census population of Area 5: 65,202
- 1/7 of 2010 Census total population of County: 102,634 (ideal population)
- Difference: $102,634 - 65,202 = 37,432$ (absolute deviation)
- Absolute deviation / ideal population: $37,432 / 102,634 = 36.5\%$ (greater than 10%)

Example of Area 5

2020, Map 5

- 2020 Census population of Area 5: 108,327
- 1/7 of 2020 Census total population of County: 109,195 (ideal population)
- Difference: $109,195 - 108,327 = 868$ (absolute deviation)
- Absolute deviation / ideal population: $868 / 109,195 = 0.8\%$ (less than 10%)

Current Map Population Data

Ideal Population for each Trustee Area 109,195

Trustee Area	Population*	Absolute Deviation from Ideal	Percent Deviation from Ideal	Compliance with 10% Rule
Area 1	74,594	34,601	31.7%	NO
Area 2	143,343	34,148	31.3%	NO
Area 3	120,091	10,896	10.0%	YES
Area 4	140,513	31,318	28.7%	NO
Area 5	70,306	38,889	35.6%	NO
Area 6	129,648	20,453	18.7%	NO
Area 7	85,872	23,323	21.4%	NO
County Total	764,367	Ideal population for each Trustee Area is 1/7 of the Total		

*Note: Population data are fairly accurate because most Census blocks are contained entirely within trustee boundary areas. There are some Census blocks that cross boundaries. The population counts for those blocks are assigned to the area where the center of the block is located.

Adjusted Map Population Data

Ideal Population for each Trustee Area 109,195

Trustee Area	Population*	Absolute Deviation from Ideal	Percent Deviation from Ideal	Compliance with 10% Rule
Area 1	108,423	772	0.7%	YES
Area 2	105,322	3,873	3.5%	YES
Area 3	120,091	10,896	10.0%	YES
Area 4	106,684	2,511	2.3%	YES
Area 5	108,327	868	0.8%	YES
Area 6	106,816	2,379	2.2%	YES
Area 7	108,704	491	0.4%	YES
County Total	764,367	Ideal population for each Trustee Area is 1/7 of the Total		

*Note: Population data are fairly accurate because most Census blocks are contained entirely within trustee boundary areas. There are some Census blocks that cross boundaries. The population counts for those blocks are assigned to the area where the center of the block is located.

Trustee Maps Next Steps

- Feedback from Board for Consideration
- Public Comments
 - January CCSDO Meeting ✓
 - February CCSDO Meeting
- Digital Trustee Map Online February
- Trustee Map Adoption - March CCSDO Meeting
- Shapefiles due April

Submit maps
for CCSDO
consideration to
nclay@smcoe.org



Thank you!

Questions?

nclay@smcoe.org



SAN MATEO
COUNTY
OFFICE OF
EDUCATION

www.smcoe.org