

Commercial Sexual Exploitation of Children (CSEC) and Human Trafficking Protocol for Educators

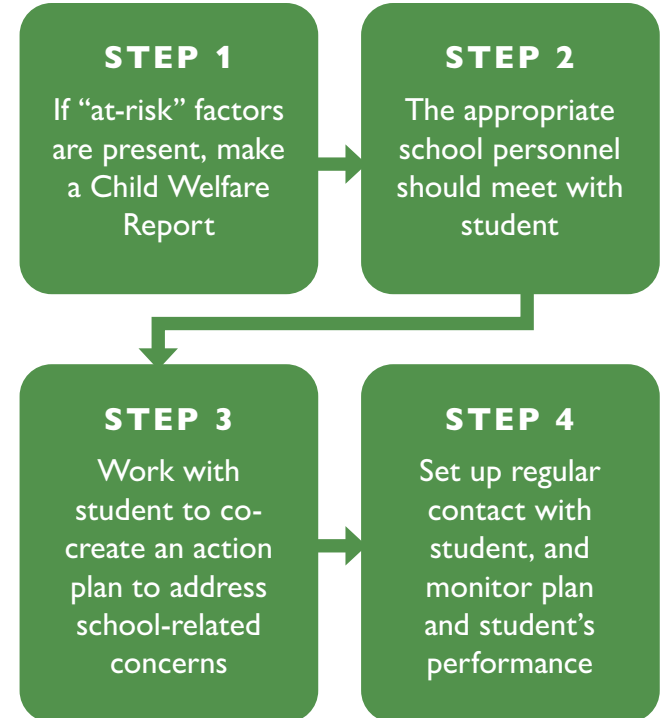
“At-Risk” Factors

Child meets AT RISK concern if at least **one** of the following factors is present:

1. Child/youth exhibits behaviors or otherwise indicates that they are being controlled or groomed by another person.
2. Child/youth spends time with people known to be involved in commercial sex.
3. Child/youth’s internet, cell phone, or social media use involves social or sexual behavior that is atypical for his/her age.

Child meets AT RISK concern if a minimum of **two** of the following indicators are present:

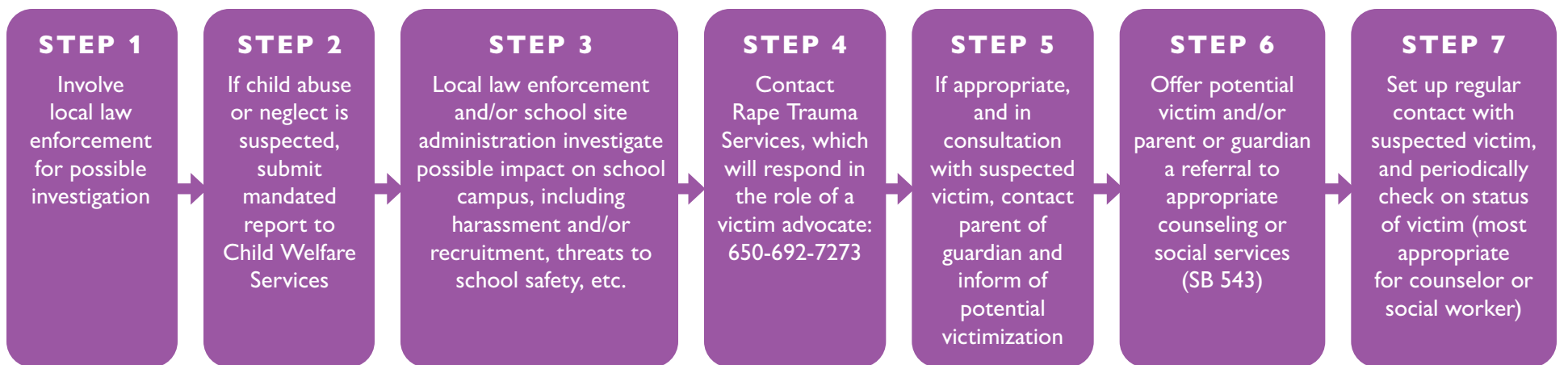
1. Child/youth has a history of running away, unstable housing, including multiple foster care placements, or periods of homelessness, including couch surfing.
2. Child/youth has had prior involvement with law enforcement or the juvenile justice system.
3. Child/youth is frequently truant from school.
4. Child/youth’s relationships are of concern, placing them at risk or in danger of exploitation.
5. Child/youth has a history of substance abuse, specifically narcotics, opiates, crack/cocaine and amphetamines.



Suspected Recruitment or Actual Exploitation by Students



Suspected Victim of CSEC/Human Trafficking



Confirmed Victim of CSEC/Human Trafficking

